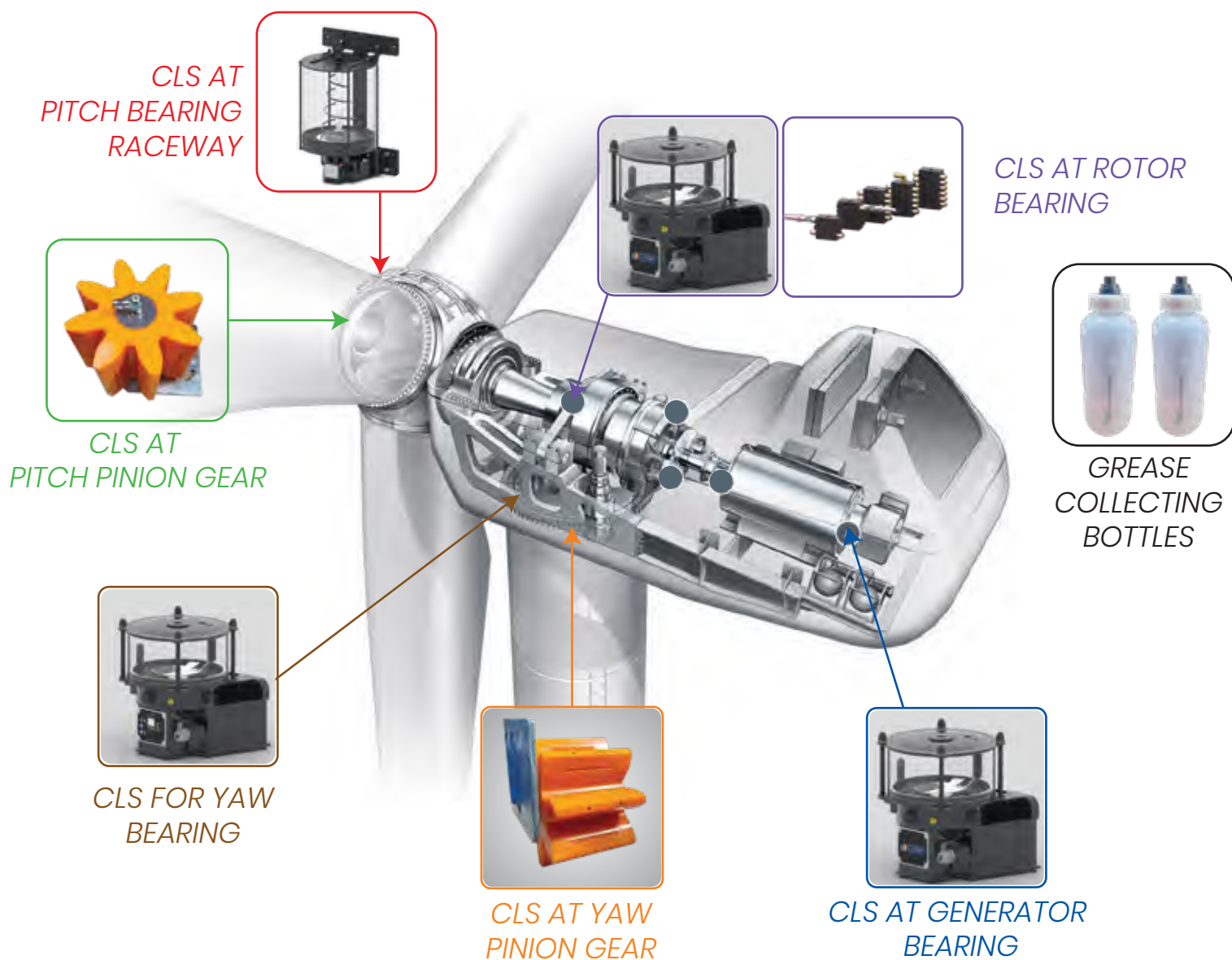




CENTRALIZED LUBRICATION SYSTEM

WIND TURBINE



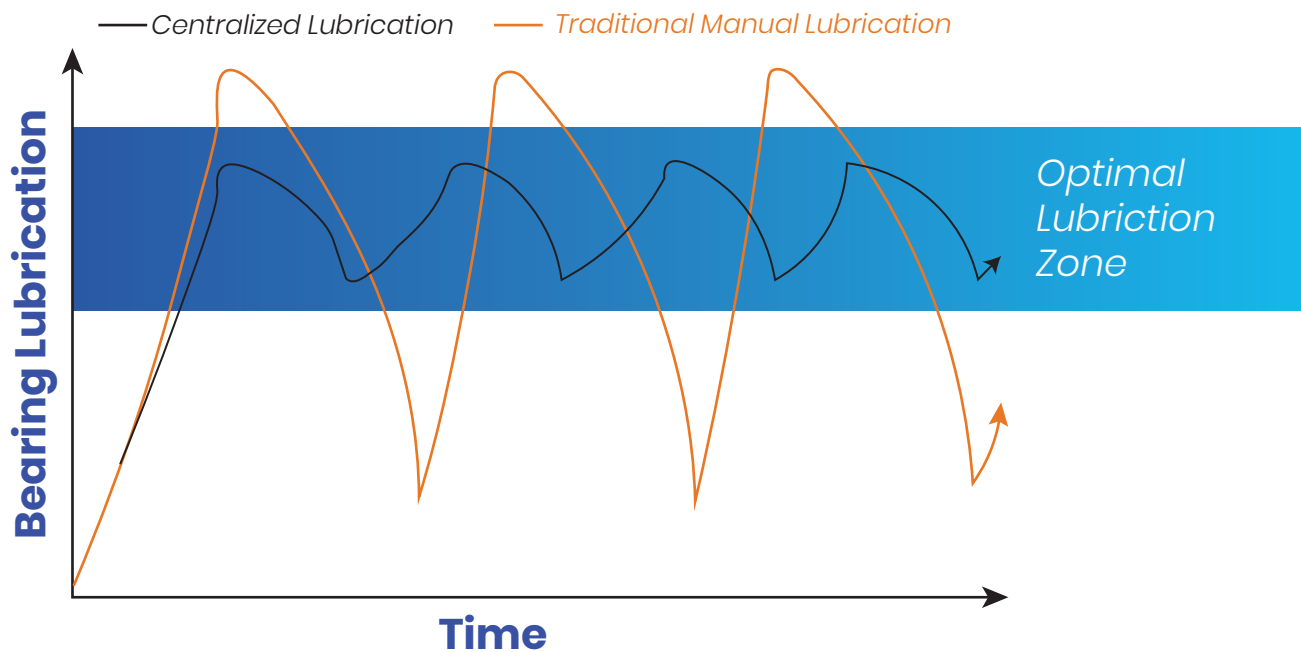
RIKKON GROUP OF COMPANIES



About LUBERR

LUBERR - Manufacturing operations in Cheyyar Sipcot Near Kanchipuram, Tamilnadu, India. The company is based on its solid obligation to technical virtue and world class manufacturing facilities, delivers quality products to its users. Rikkon Lubes is an Indian Lubrication system manufacturer proven for its high-tech manufacturing and In house Research and Development (recognition by DSIR, Govt. of India) capability. Our effort of providing Superior Indian Lubrication product is being recognised in all the segments in the global Market.

Automatic Lubrication System Vs Manual Lubrication System:



A. SINGLE POINT LUBRICATION

The **MONOLUBERR ECE** is designed to offer superior advantages in cost competitiveness & user friendly over conventional gas type single point lubricators. The MONOLUBERR ECE has a creative & innovative design which satisfies a wide variety of demands for industrial applications. It operates based on the proven technology of electrochemical reaction which generates inert nitrogen (N_2) through the systematic use of an electrolyte & electrical energy.

The MONOLUBERR ECE utilizes intuitive mode selective mechanism to ensure error-free & simple operation. It is a right choice for cost effective, reliable single point lubricator for most industrial application.

Features	Specifications
Gas Type	Nitrogen (N_2) gas
Gas Generating method	Electrochemical
Grease capacity	60cc, 120cc, 240cc
Housing Design	Transparent Plastic
Operating Temp range	-20°C - 55°C (-4°F ~ 131°F)
Operating Pressure	Max. 5kgf/cm ² (70psi)
Remote Installation	Up to 1m (3ft) using a 8mm (5/16") O.D tube
Available Dispensing periods	1,3,6,9 & 12 months
Product size	120cc : 77mm Dia (3.03") x 112mm (4.41") 240cc: 77mm Dia (3.03") x 157mm (6.18")



A Solution for windmill Lubrication

Wind turbines are located in areas with consistent wind density to ensure maximum power generation & has many bearings & drives have need of lubrication at regular interval of time. LUBERR windmill centralized lubrication system simplifies the overhaul tasks, extends the service interval & Protects from sudden repairs & downtime are avoided and the life span of the wind turbine is increased.

LUBERR windmill CLS applications on blade bearings, main bearing and generators. In addition our range includes open pinion gear lubrication systems, Oil cooling system for gear boxes & grease collecting bottles.

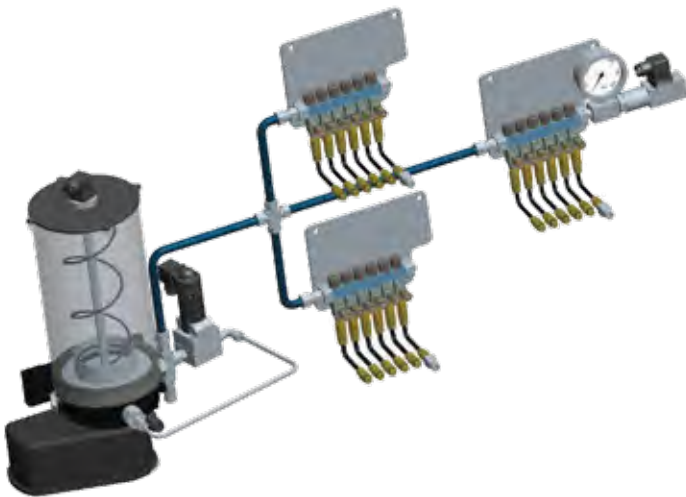
B. Injector type LUBERR system

The LUBERR system can be operated with the LUBERR pump & Grease Injectors using a vent assembly. Max working pressure of the system is 150Bar. LUBERR pump is connected to a Electric vent valve & Low level switch. The pump is fitted with a inbuilt PRV for mechanical safety. Each injector's are precisely manufactured under very close tolerances to give a metered quantity of grease output during its operational life time.

INJECTOR LAYOUT

Features:

- Reverse Protection circuit / electrical fuses are built inside the pump for the electrical safety.
- Visual Indicators are provided to know the injector's working status.
- Three models of injectors are available
- SVM33 - output / stroke 0.016 cc to 0.05cc
- SVM32 - output / stroke 0.016 cc to 1.3 cc
- The Grease output from each injector point can be adjusted individually to suit the site needs
- High quality push in Fittings are used for easy fitment of CLS



LUBERR System

LUBERR Systems have been designed to meet the roughest lubrication needs of wind mill bearing with grease or adhesive lubricants. The Lubrication occurs in distributed, timed intervals at a high pressure. This the Lubrication of bearings under a wide range of temperatures is possible. The system is easy to monitor & ensures that the right quantity of grease is supplied to the lubrication points at right intervals.

C. Progressive Type LUBERR System

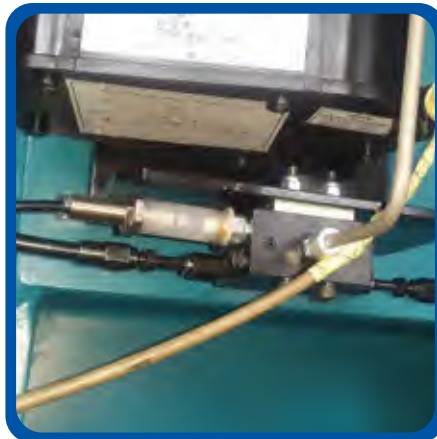
The Progressive Type LUBERR system can be operated with the LUBERR pump & Progressive Grease Distributors. Their operation is progressive manner where if one point is not functioning complete system will shut off. Pump can deliver up to three independent outputs with lubricant each with its own pumping unit consist of number of lubrication points. Max operating pressure of the system is 350Bar.

Distributor Layout



Features:

- 🔥 Low level optional pump capacity 2Ltrs, 4 Ltrs, 8 Ltrs & 15 Ltrs
- 🔥 Available in both follower model & Stirrer model
- 🔥 High pressure push in type fitting or compression fitting available in 4mm & 6 mm OD tube.
- 🔥 Distributor output fixed (0.2 cc / stroke / cycle) - for variable outputs use variable progressive feeder.
- 🔥 Distributor outlets - 6 - 28 ports available inlet - 1/8 BSP or M10 threaded
- 🔥 Types - Horizontal cross porting / vertical cross porting / non porting types available
- 🔥 Monitoring options - A. Cycle indicators B. Limit Switch C. Proximity Switch



D. Gear Box Forced Lube Oil System

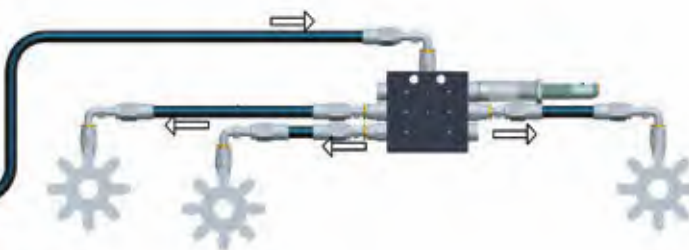
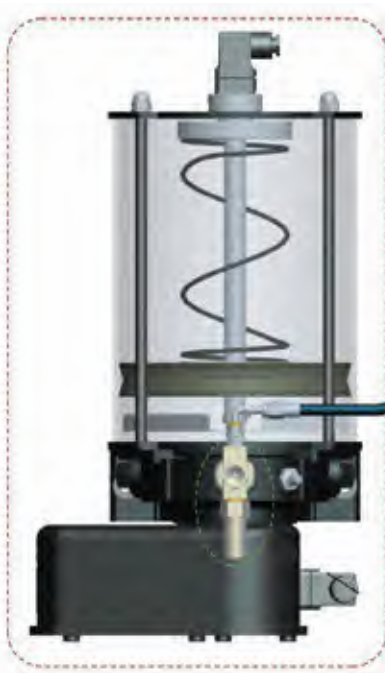
In Oil circulatory or Forced lube oil system, the oil is continuously supplied to various moving parts & heavily loaded bearing. In such systems oil acts both as lubricant & coolant by carrying away heat generated in the bearing / moving parts. The oil after lubrication is returned to reservoir either directly or through filter. These system employ reservoirs of capacity ranging from 25 Ltrs to 6000 Ltrs. The pumps are heavy duty, intended for continuous running with flow rate ranging from 5 LPM to 1200



System Pressure.....	Max up to 400 bar
Lubricating oil (mineral based).....	ISO VG 406 / 320 / others
Filter / Strainer.....	Duplex / simplex type
Pump.....	Gear pump, for high pressure radial piston pump
Motors	3 Phase induction motors, TEFC, Energy efficient
Flow monitoring.....	Flow switch with flow indicator
Oil cooler.....	Plate Type heat exchanger tube / shell type oil cooler
Other Accessories.....	Level indicator & switch / Pressure gauge & switch / Temperature gauge & switch

E. Open Gear Pinion Lubrication System

The RIKKON lubes Gear pinion lubrication systems can be operated using LUBERR centralized lubrication system or MONOLUBERR single point lubrication. They are used for mineral oil and grease up to a consistency of NLGI grade-2. It must be ensure that the oil or grease used do not have a tendency to change their consistency-significantly in the course of time or under the influence of temperature or pressure. During the gear movement the lubricant fed by the pump into present individual volumes to the connected gear teeth.





contact us



contact person :



📍 No: 203, Nageswara Rao Road, 2nd extrn.,
Athipet, Ambattur, Chennai - 600 058
Tamil Nadu, INDIA

✉️ info@rikkongroup.com / sales@rikkongroup.com

🌐 www.rikkongroup.com / www.luberr.in

